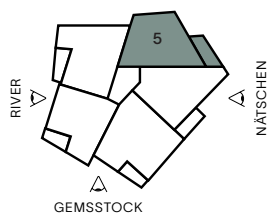
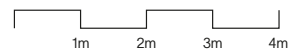
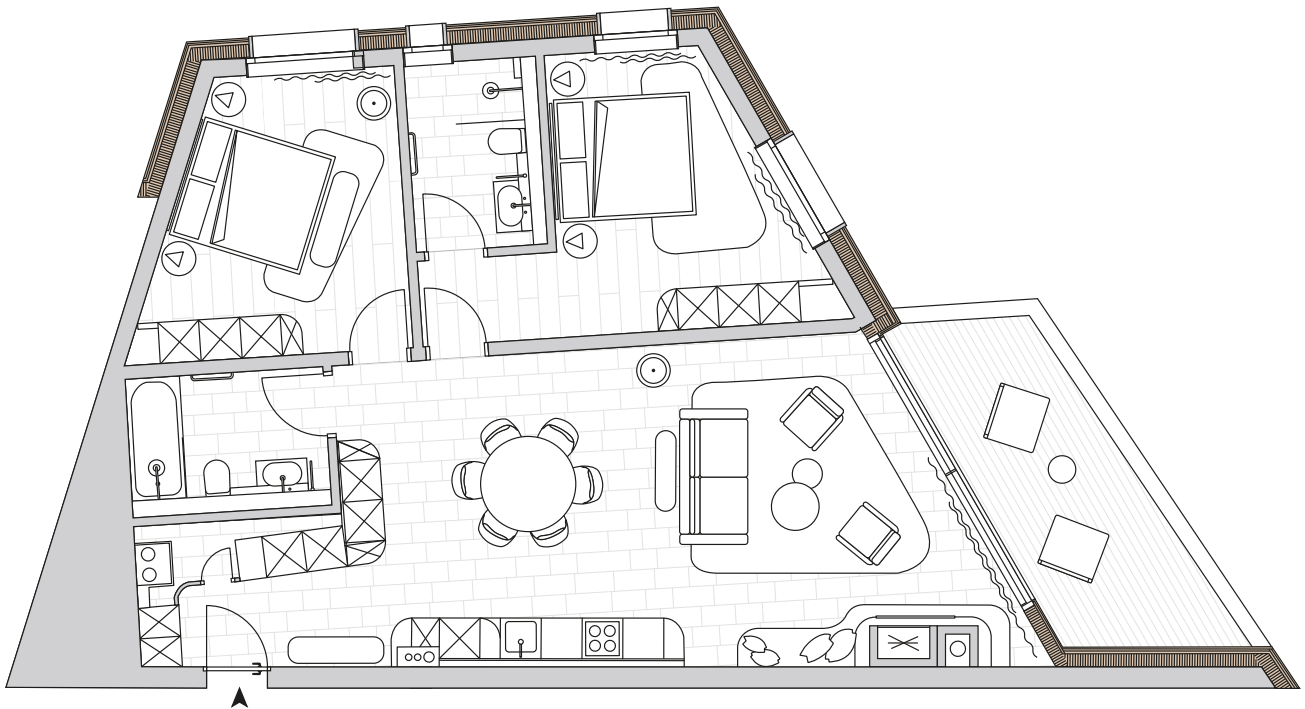


# 2 OG 5



**Bedrooms: 2 / Zimmer: 3.5**  
**Property size / Wohnungsgrösse: 98.6 m<sup>2</sup>**  
**Loggia / Loggia: 12.5 m<sup>2</sup>**

'Property size' describes the apartment area plus 25% of any ground floor terrace, 50% of any loggia and 25% of the cellar.

'Wohnungsgrösse' beschreibt die Wohnungsfläche plus 25 % der Terrasse im Erdgeschoss, 50 % der Loggia und 25 % des Kellers.